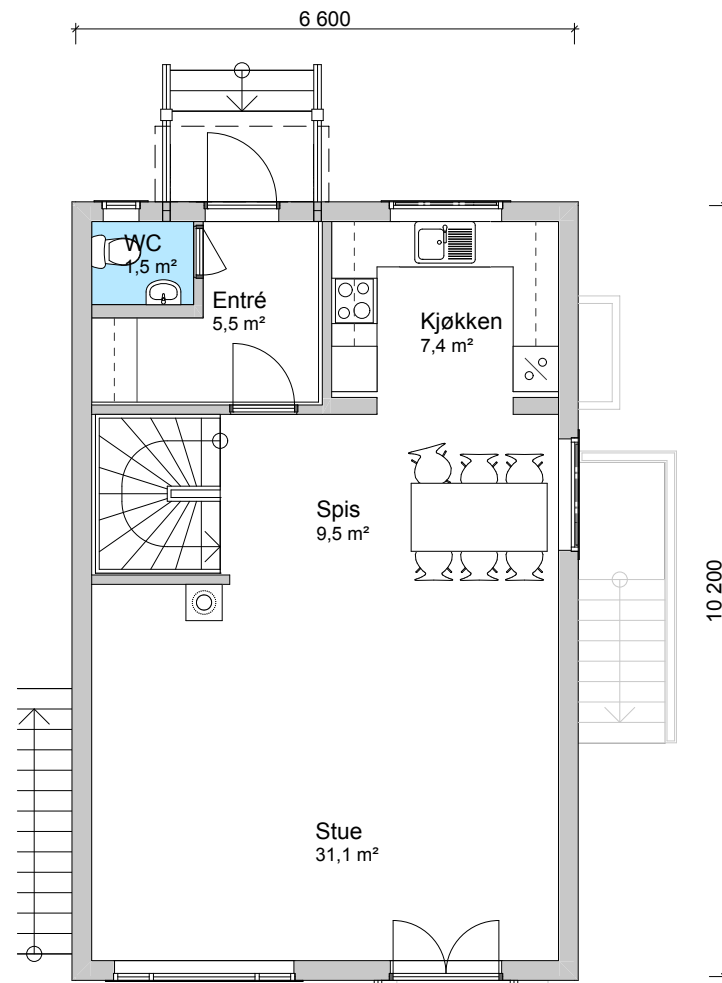
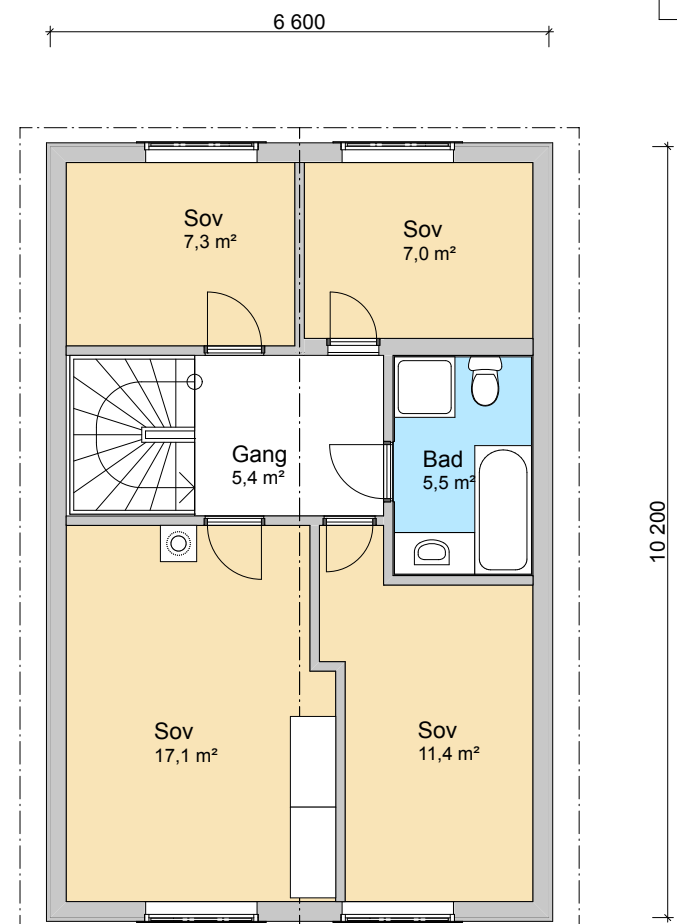


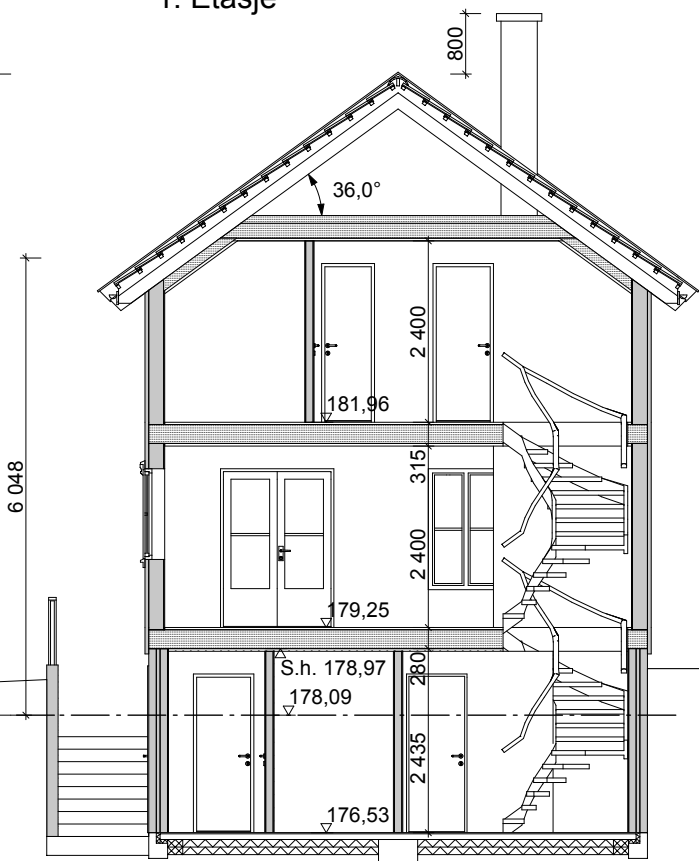
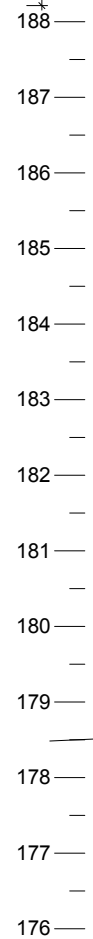
Sokkel



1. Etasje



2. Etasje



Snitt A-A Synlig grunnmur for Hus C:
 $1,3 \text{ m}^2 + 12,4 \text{ m}^2 + 6,1 \text{ m}^2 + 6,7 \text{ m}^2 = 26,5 \text{ m}^2$
 $26,5 \text{ m}^2 / 33,6 \text{ m} = 0,789 \text{ m}$

Prosjekt:
Brannfjellveien 104

Tegning:
Planer & Snitt Hus C

Tegningsnr.:
A20-3
 Målestokk:
1:100
 Dato:
06.09.2010

Tiltakshaver:
Anders Opsahl Eiendom AS
 J.Scharffenbergs v 91
 0694 Oslo

Prosjekterende:
 Siv.ark. Nils Haugrud
 Øvre Slottsgt. 12
 Mail: nhaugrud@online.no
 0157 Oslo
 Tlf.: 22 42 42 93