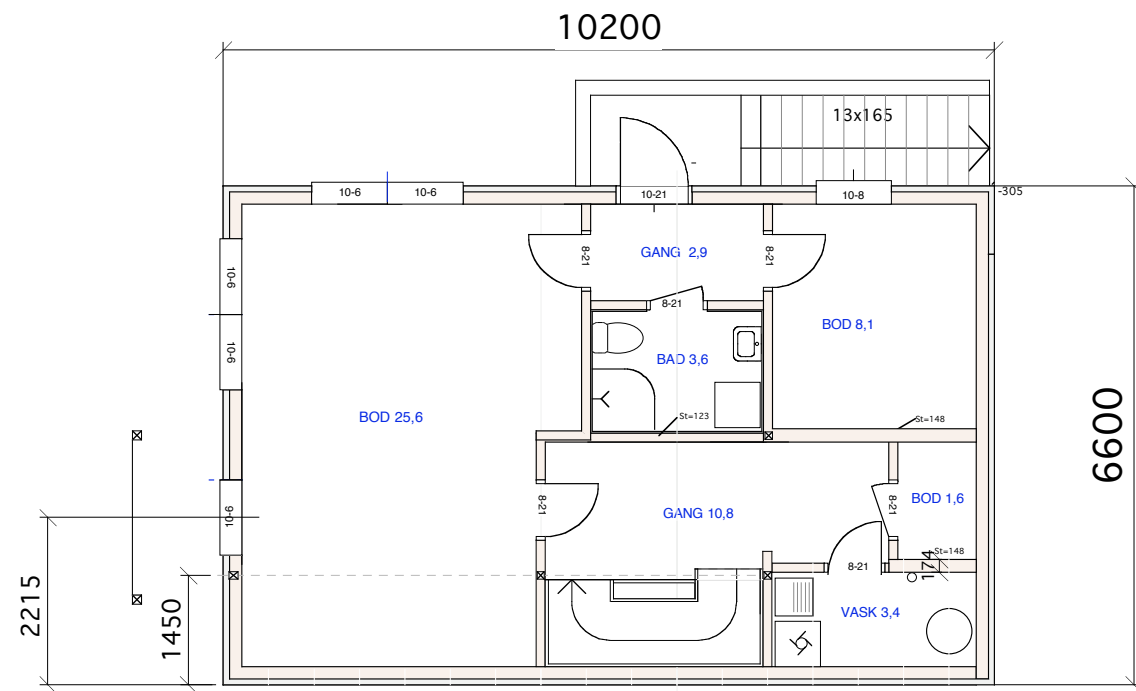


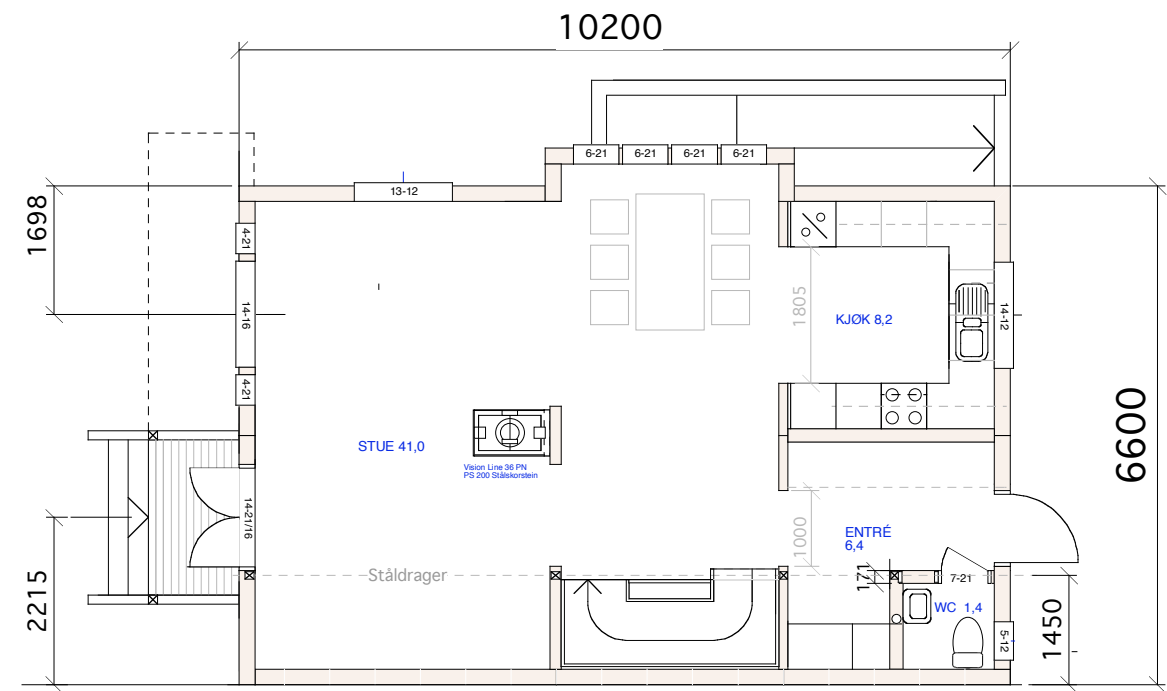
2. ETG

BRA 62,0 kvm



KJELLER

BRA 59,5 kvm



1. ETG

BRA 62,0 kvm

SUM BRA 185,0 kvm

Hus A

11/321 Elvefaret 45 B

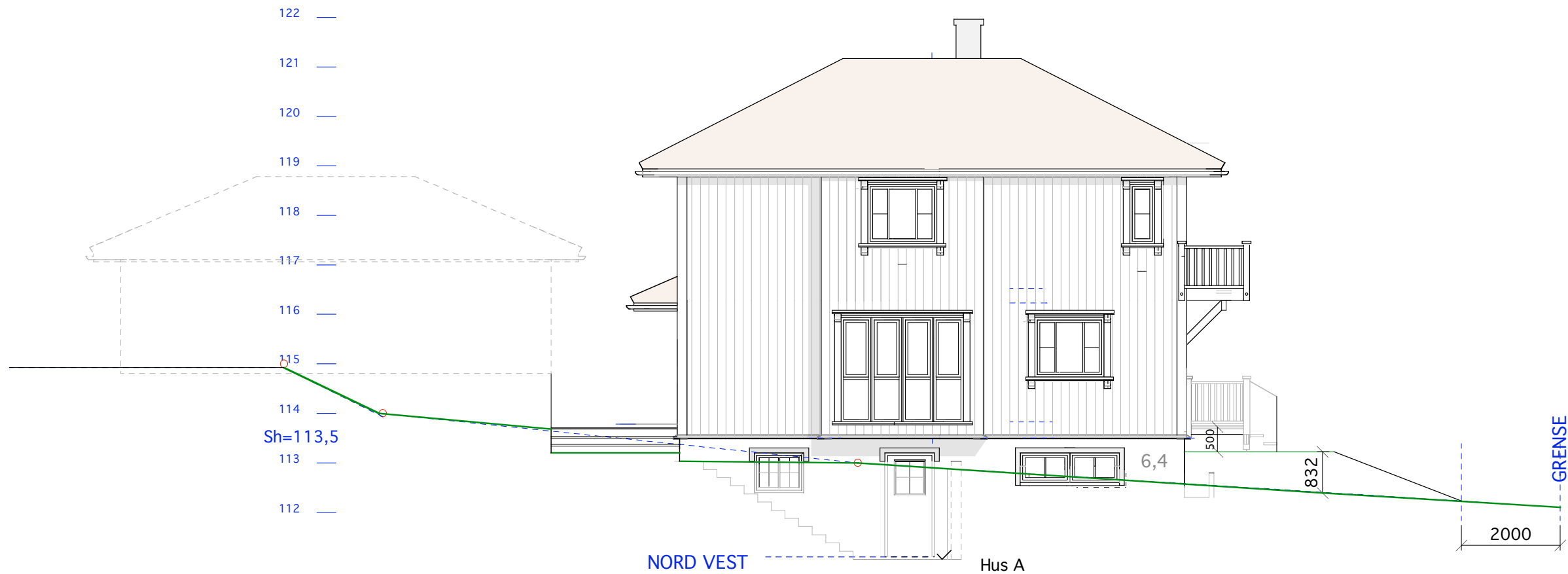
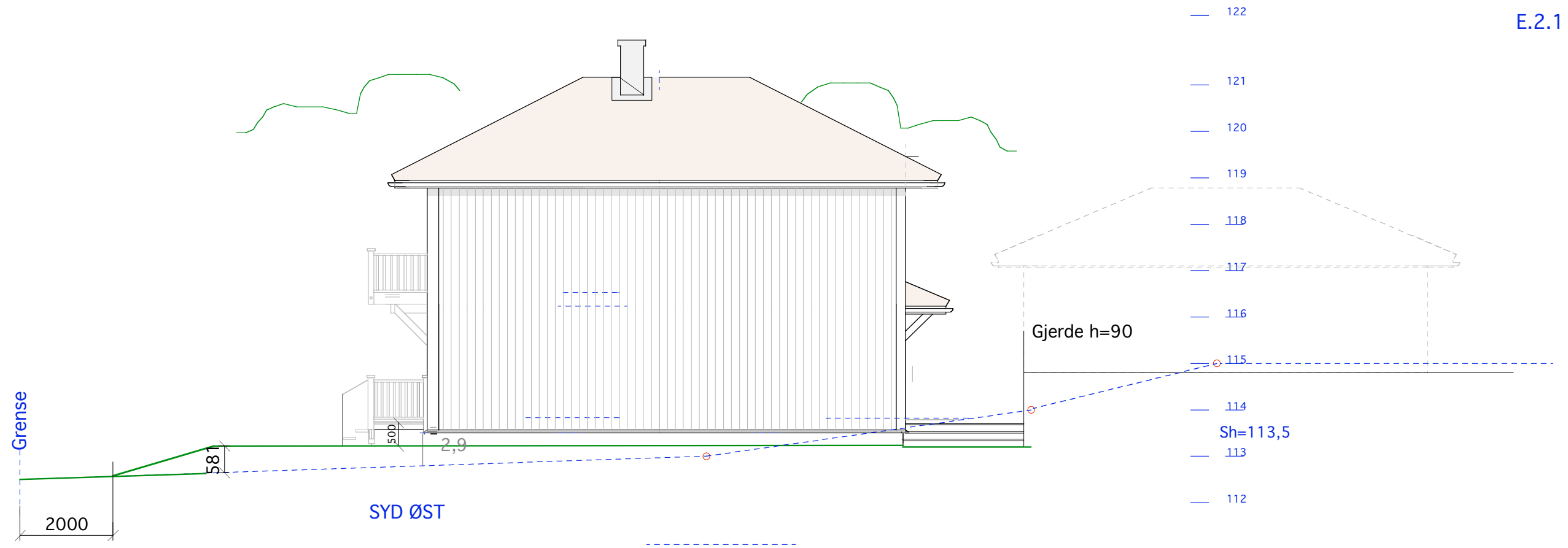
MÅL 1:100

24-05-06

24.05.07

Tiltakshaver:

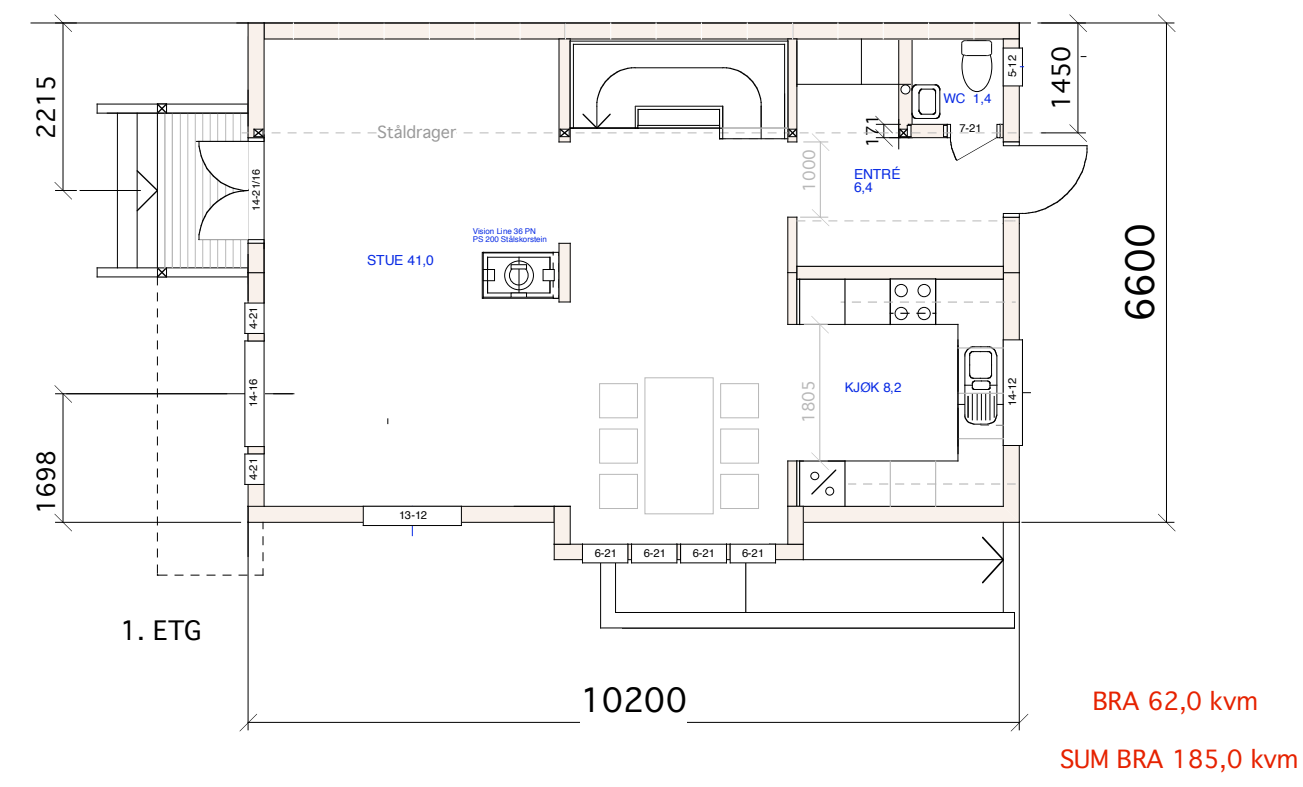
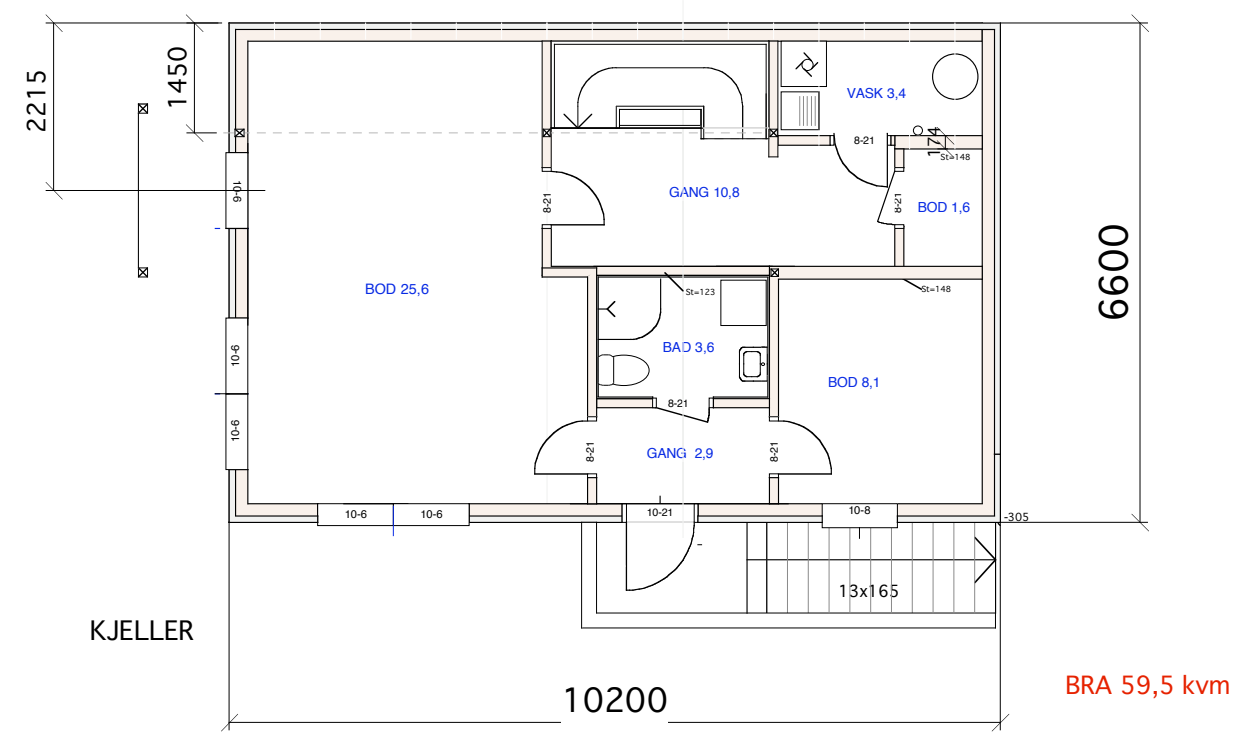
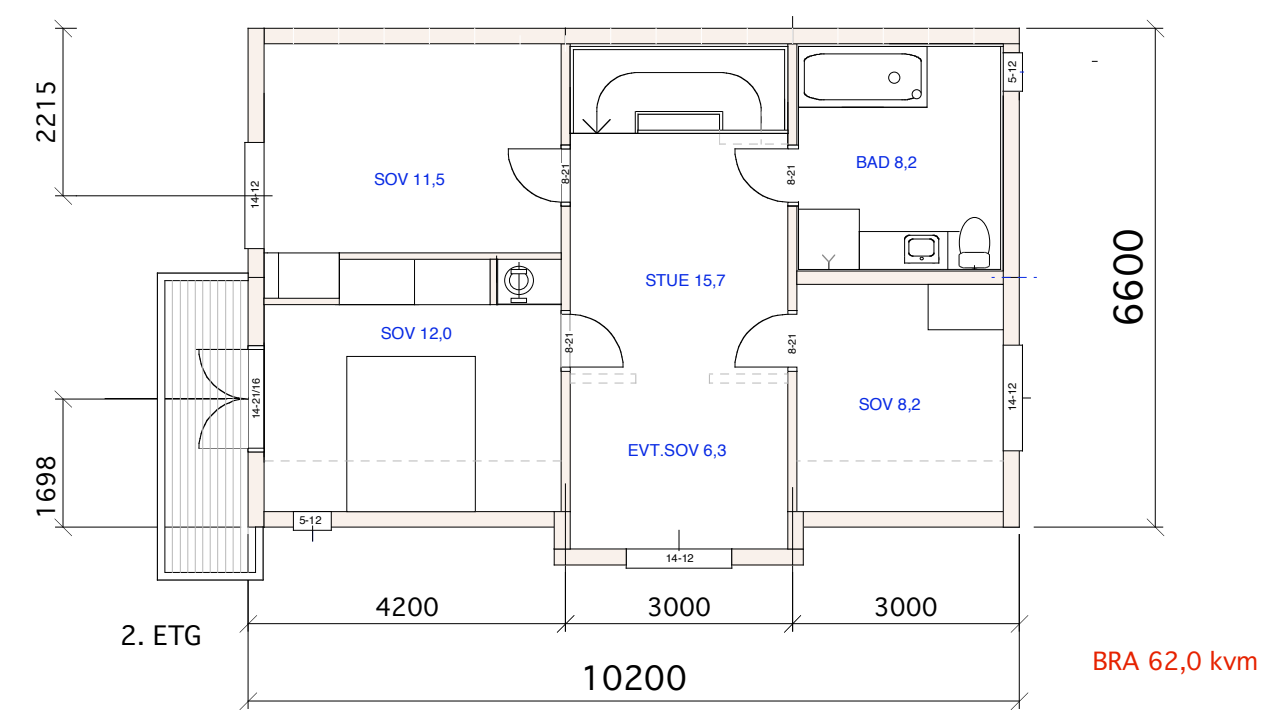
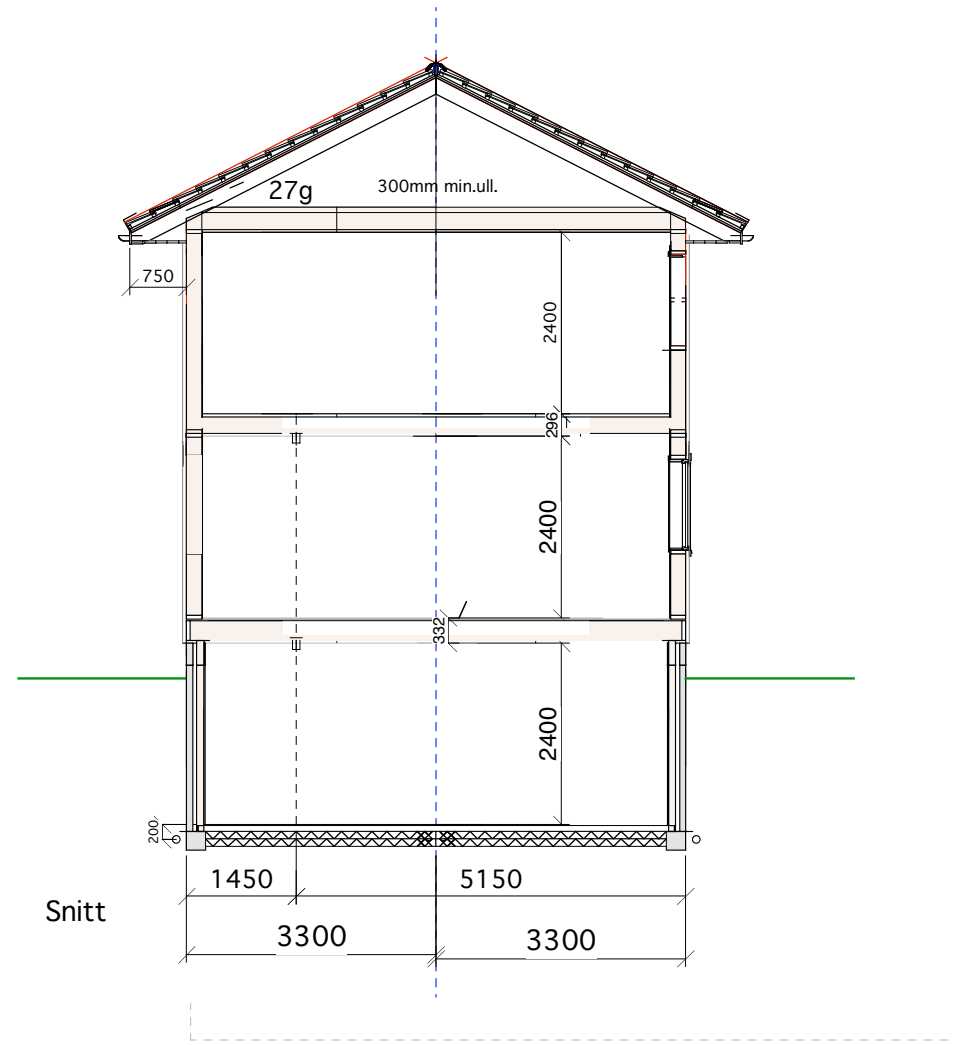
Siv.ark. Nils Haugrud.  
Øvre Slottsgt. 12, 0157 Oslo  
Tlf 22424293 Fax 22332026



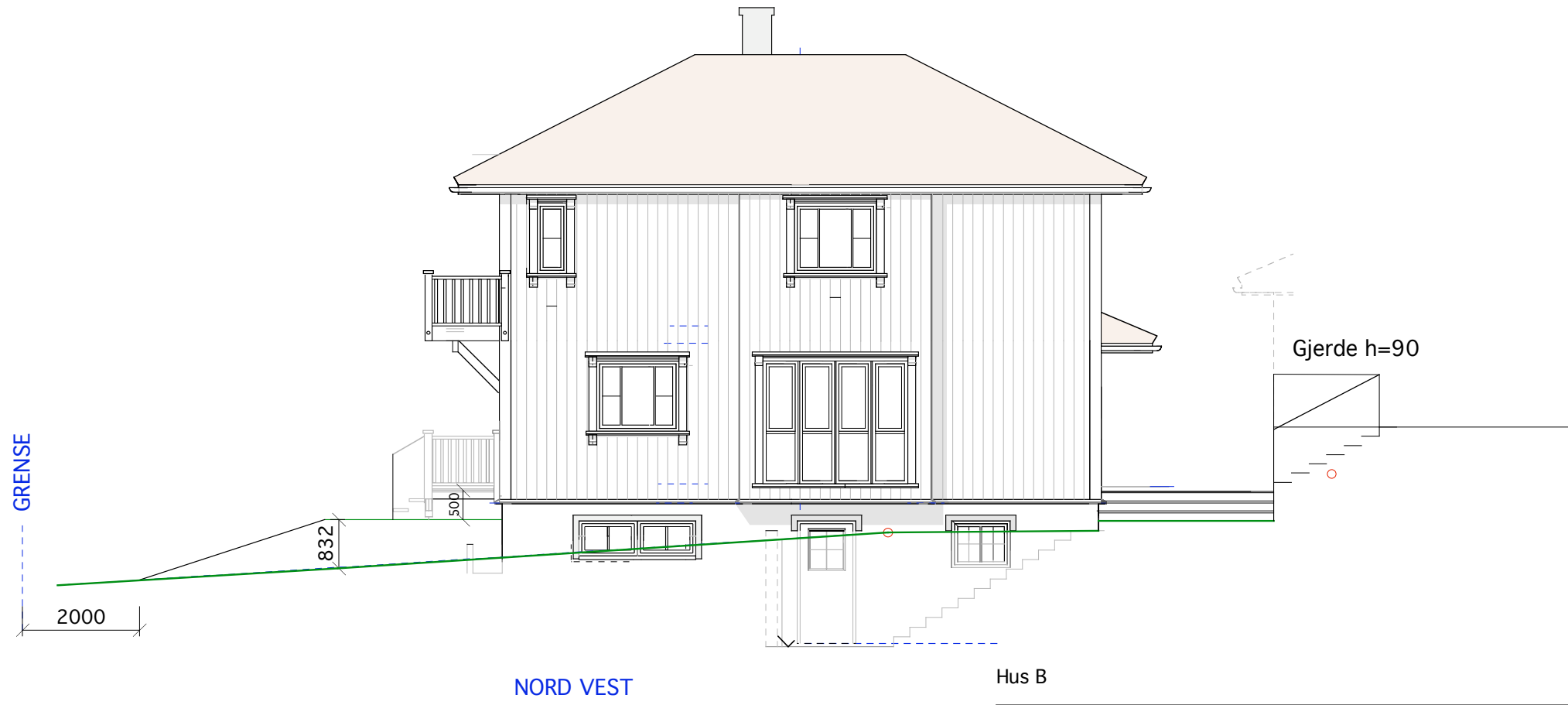
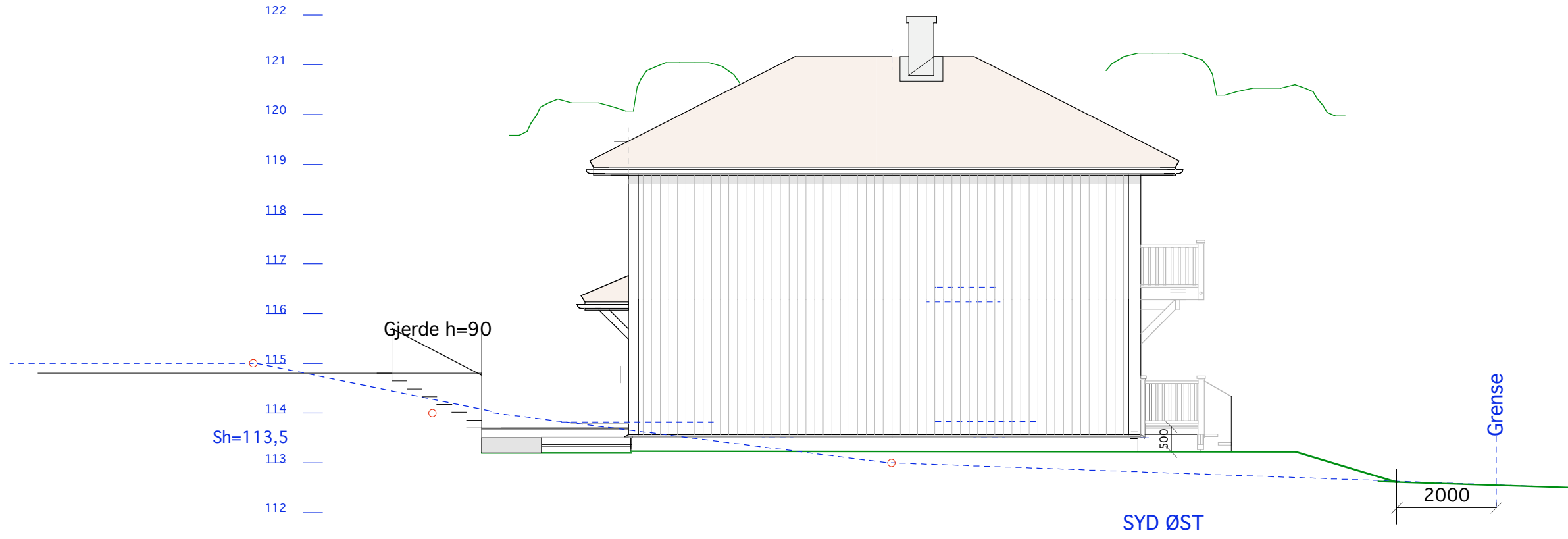


Sum eksponer grunnmur= 14 kvm Omkrets= 33,6.  
 Gjennomsn planertterreng ligger  $14/33,6 = 0,417$  14cm lavere enn sokkelhøyde.  
 Opprinnelig terreng ligger 58 cm lavere enn topp grunnmur.  
 Dvs at beregnet gesimshøyde til planert terreng er  $6,50 - 0,14 = 6,36$ , Mens beregnet mønehøyde er 8,13





Hus B





Sum eksponer geunnmur= 14 kvm Omkrets= 33,6.  
 Gjennomsn planertterreng ligger  $14/33,6= 14\text{cm}$  lavere enn sokkelhøyde.  
 Opprinnelig terreng ligger 58 cm lavere enn topp grunnmur.  
 Dvs at beregnet gesimshøyde til planert terreng er  $6,50- 0,14= 6,36$ , Mens beregnet mønehøyde er 8,13

