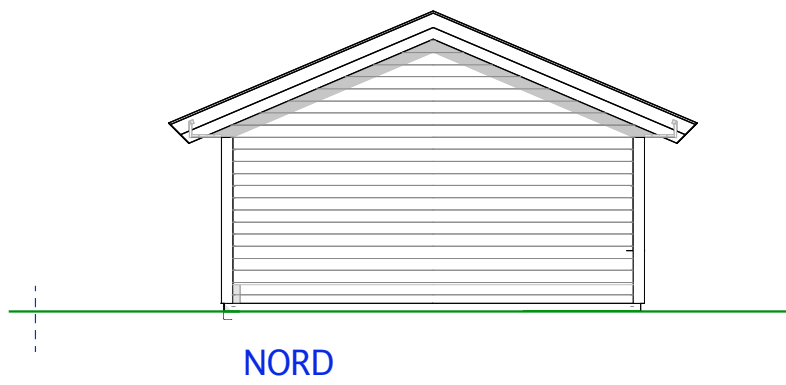
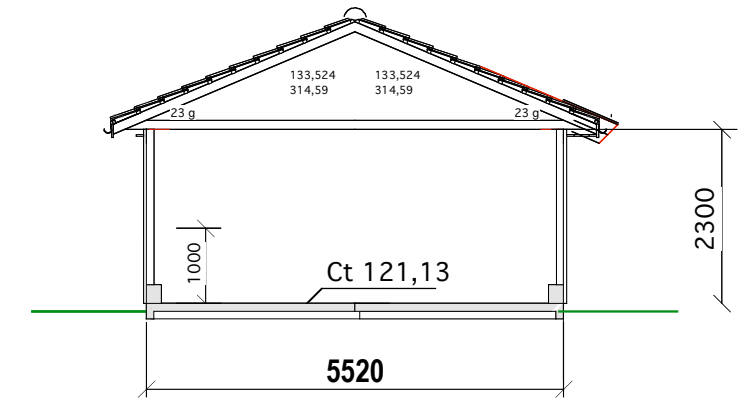


SYD

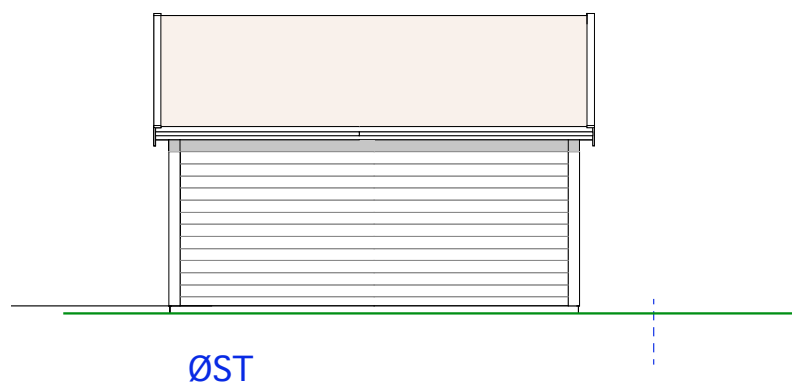


NORD

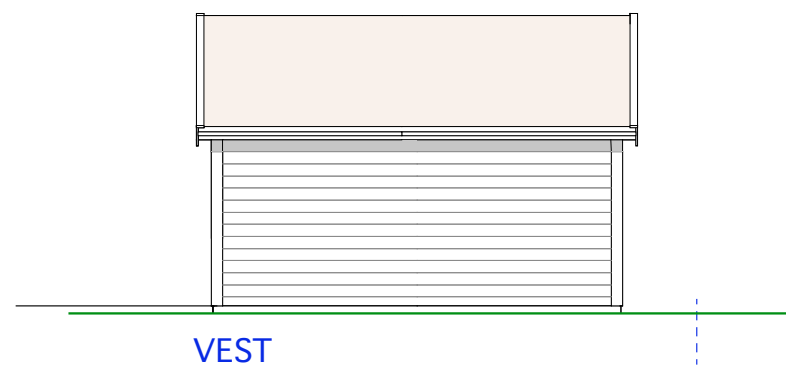
123 —
122 —
121 —
120 —



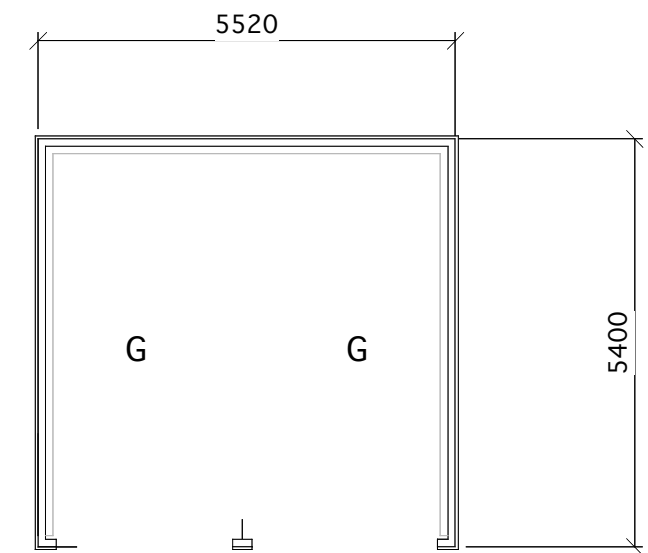
SNITT



ØST



VEST



PLAN

Skal ligge 15 cm lavere enn car port 1

27/ 624

Car port 2

Skal ligge på opprinnelig terreng

Holmenkollveien 35

Mål: 1:100
Dato: 14-03-12

TILTAKSHAVER
Dato: 29-10-13

Siv.ark. Nils Haugrud,
Øvre Slottsgt 12, 0157 Oslo
Tlf: 22424293