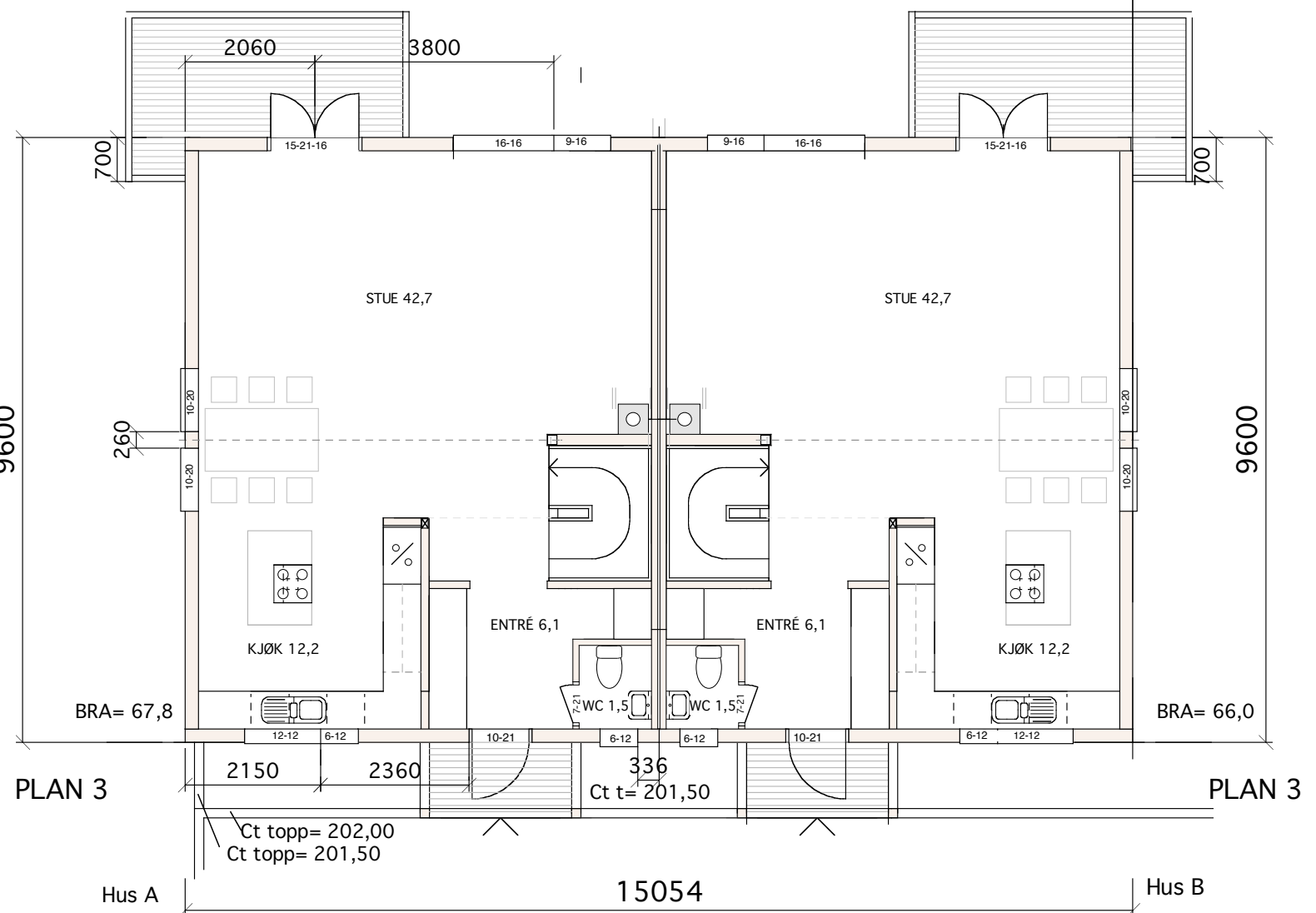
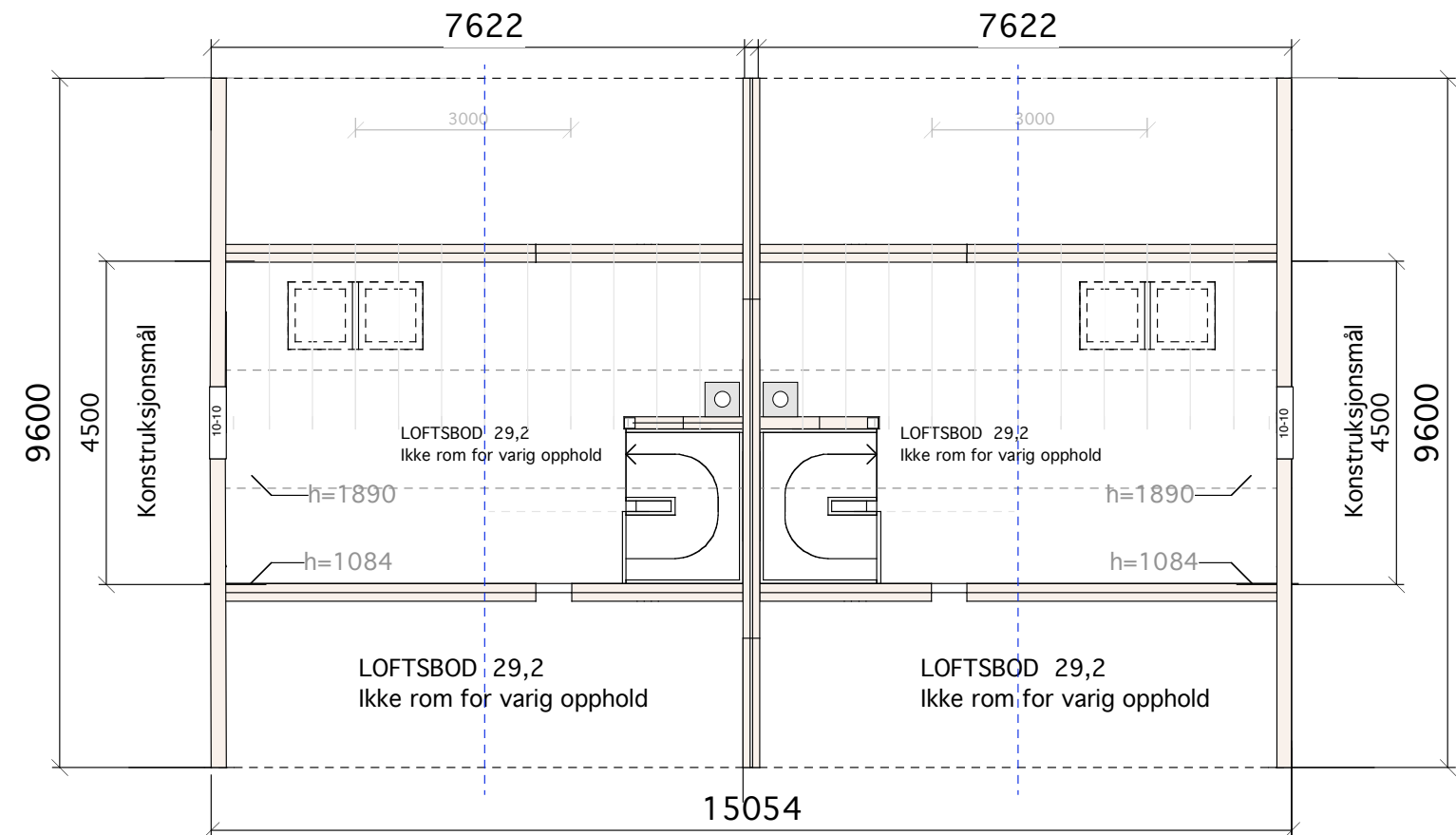
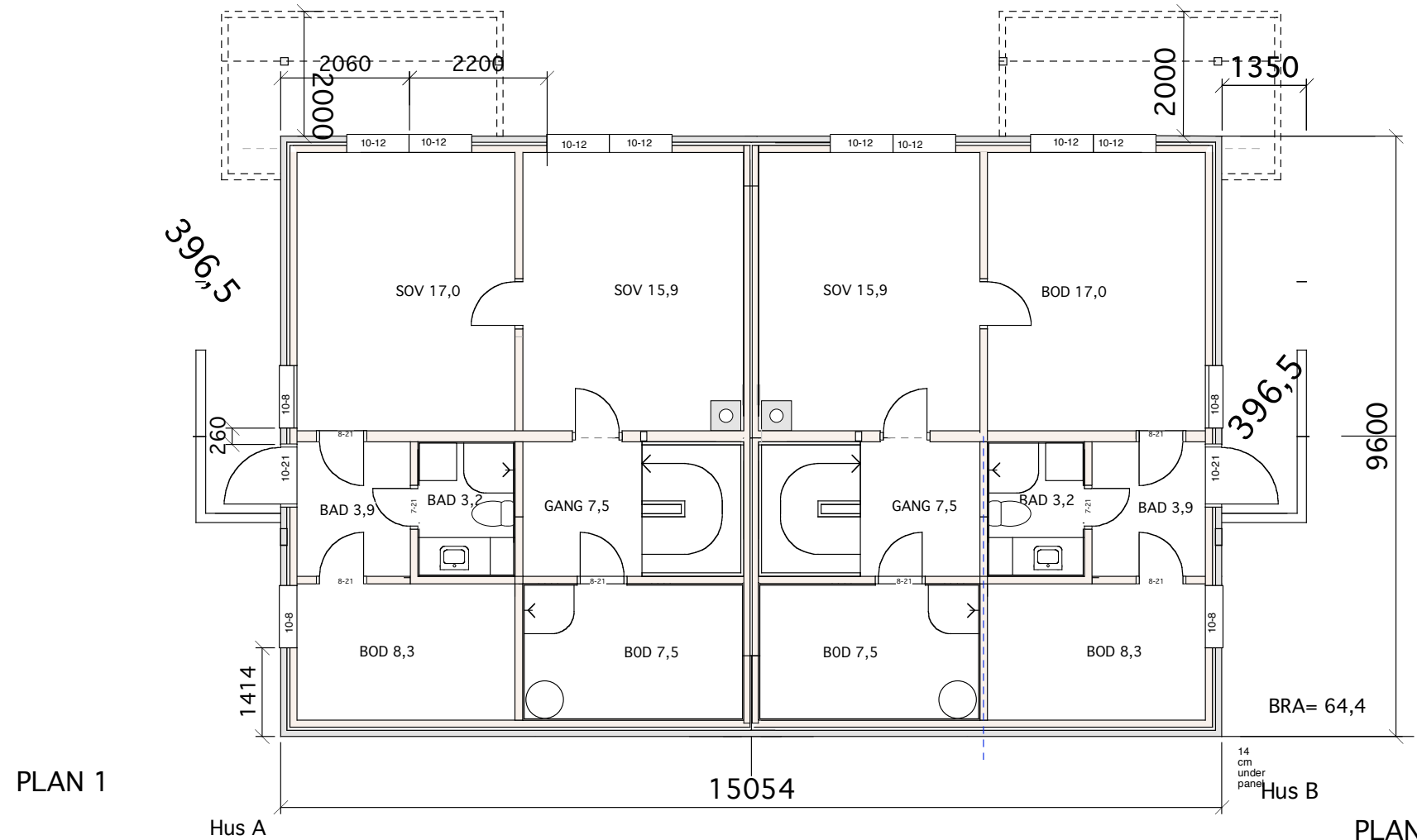
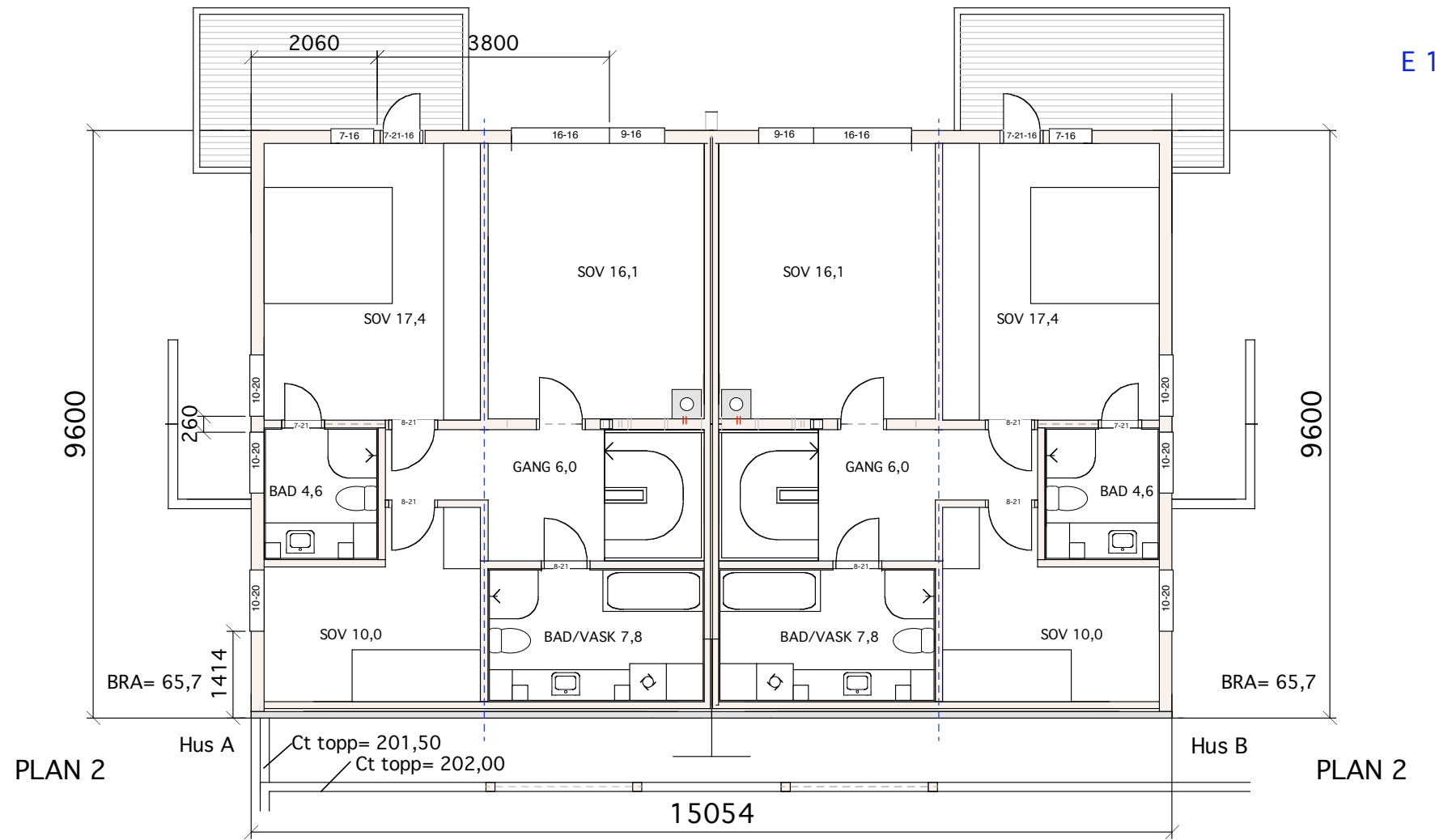
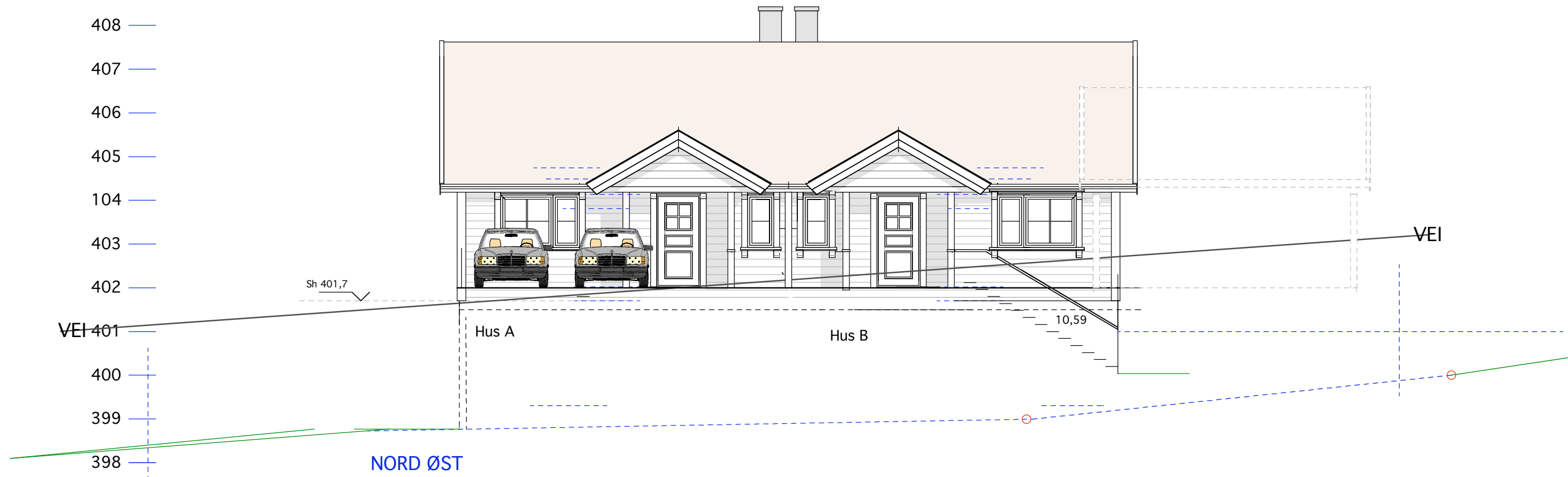
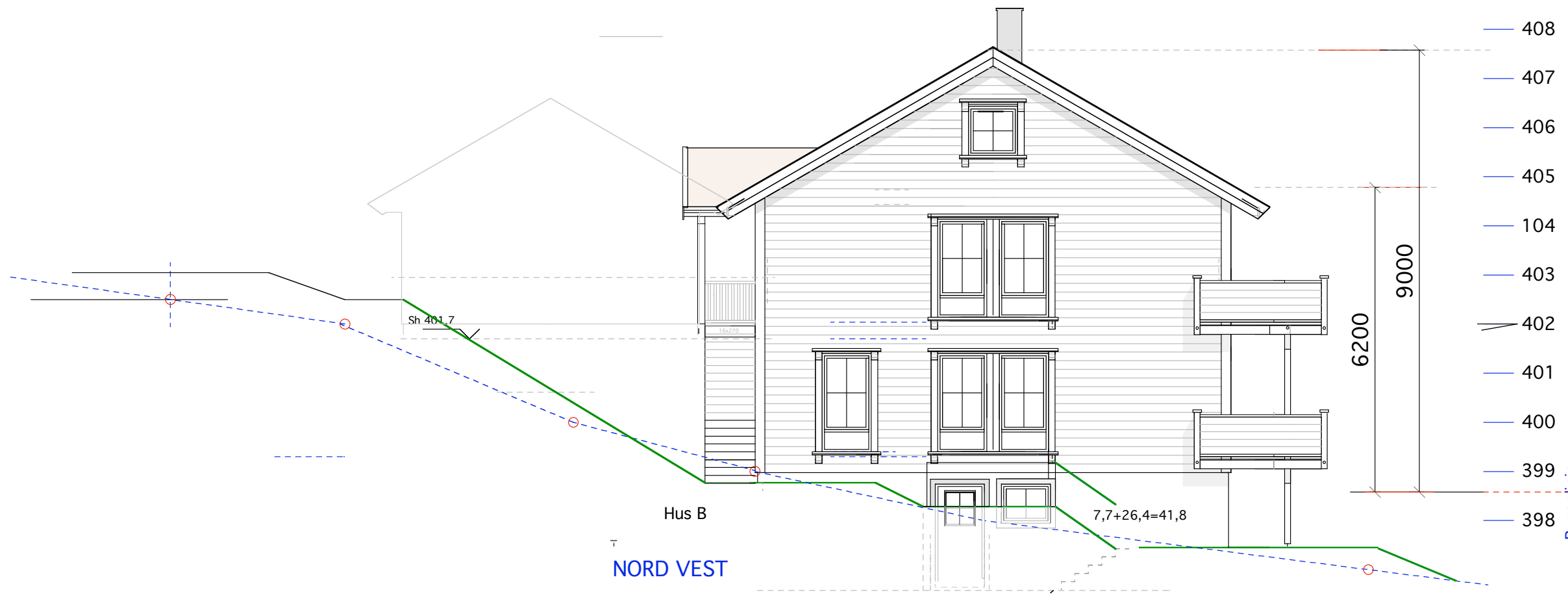


408 —  
407 —  
406 —  
405 —  
104 —  
403 —  
402 —  
401 —  
400 —  
399 —  
398 —  
397 —  
396 —  
395 —







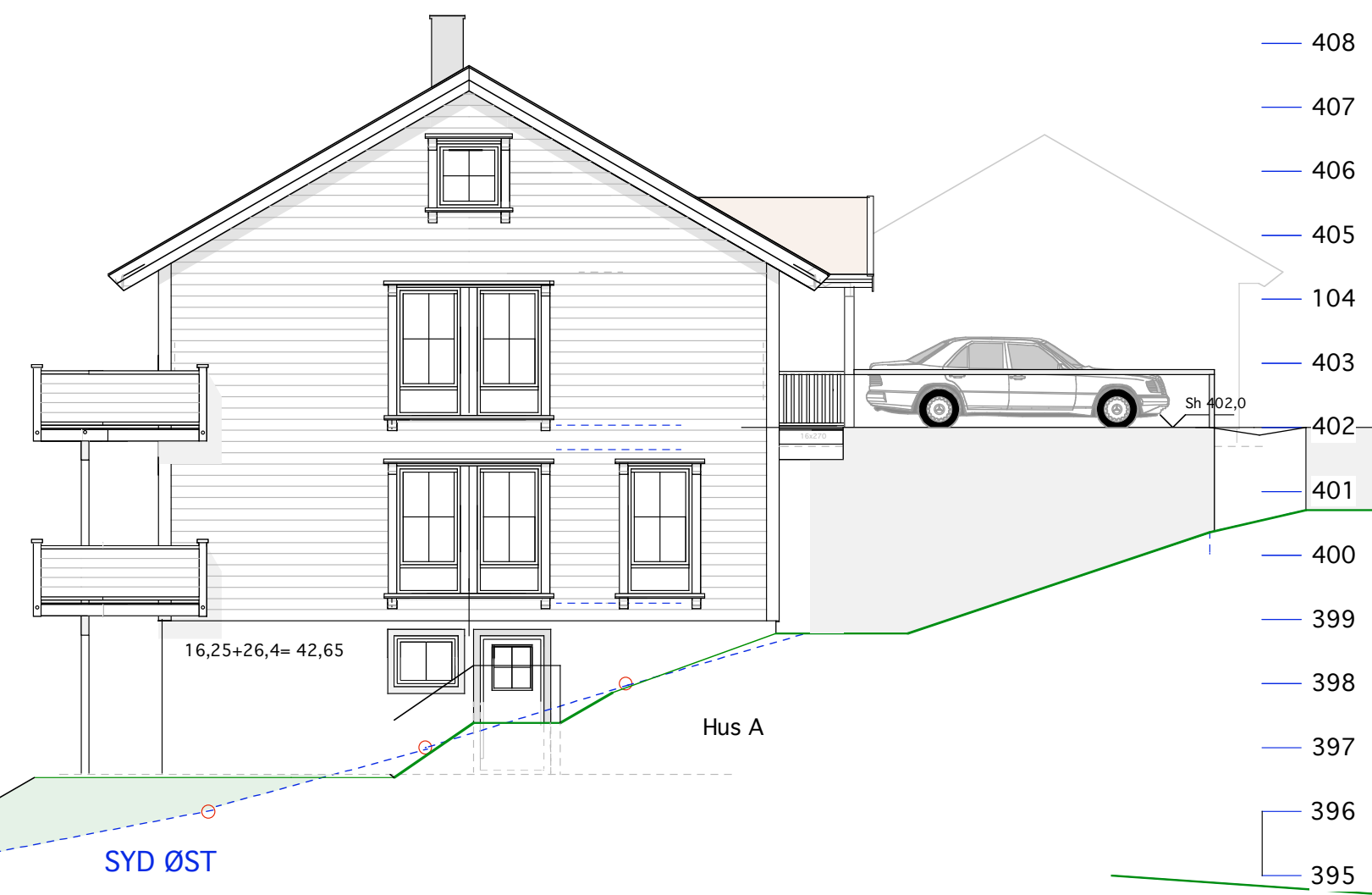


- 408
- 407
- 406
- 405
- 104
- 403
- 402
- 401
- 400
- 399
- 398

74,3

Eksponert kjeller:  
 $42,6+41,8+74,3-4,5=154,2$   
 Omkrets:  
 $2 \times (9,6+15,054)=49,3$   
 Avstand ned til gj oppf terr.  
 fra topp grunnmur=  
 $154,2/49,3= 3,12$  fra  
 Ct 401,7=**398,58**

NORD VEST



- 408
- 407
- 406
- 405
- 104
- 403
- 402
- 401
- 400
- 399
- 398
- 397
- 396
- 395

SYD ØST